



SCHOLARSHIPS & FINANCIAL AID RESOURCES

While there are no widely available scholarships specifically designated for individuals with MPS, many disability-inclusive scholarships, grants, and support programs may help reduce financial barriers to education and training.

1. Higher Education (HE)

Disabled Students' Allowances (DSAs)

Covers study-related costs due to disability, long-term illness, or mental health condition.

Can help pay for:

- specialist equipment (e.g. computer software)
- non-medical helpers (e.g. note-takers, mentors)
- extra travel costs
- other study support

Not means-tested

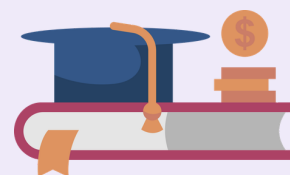
Apply through Student Finance (England, Wales, Scotland, or NI)



University Disability Support Funds

Many universities have hardship or disability funds to cover additional costs not met by DSAs.

- Apply through your university's student services or disability support office.



NHS Learning Support Fund

Additional support for eligible (healthcare students) with childcare, travel, or hardship needs.

- Includes extra help for students with disabilities studying:
 - nursing
 - midwifery
 - allied health programs



2. Scholarships & Charities

Snowdon Trust

Grants for physically disabled and sensory impaired students.

Turn2us

Database of charitable grants, including support for disabled students.

The Leverhulme Trade Charities Trust

Grants for dependants of certain trades who are also disabled.

Many universities also offer emergency hardship funding or small accessibility grants that are not widely advertised. Ask your disability support office directly.





IMPSN
International MPS Network
Mucopolysaccharide and Related Diseases

SCHOLARSHIPS & FINANCIAL AID RESOURCES

3. Employment /Work

Access to Work (DWP)

Government scheme to help with work-related support.

Can cover:

- specialist equipment
- support workers
- interpreters
- taxi fares if public transport is not possible
- mental health support



Disability Confident Employers

Encourages inclusive hiring and may offer:

- flexible working
- job carving
- additional training support

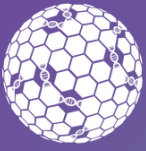


Jobcentre Plus: Specialist Disability Employment Advisers

Can help with:

- finding suitable roles
- workplace adjustments
- funding support





IMPSN
International MPS Network
Mucopolysaccharide and Related Diseases

SCHOLARSHIPS & FINANCIAL AID RESOURCES

Work and Health Programme

Employment support for disabled individuals, including:

- training opportunities
- work placements
- employability support



Charitable Funds for Work Support

Scope

Information and guidance on grants for work and training.

Shaw Trust

Employment support services and training opportunities.

Leonard Cheshire

Training and workplace support programmes.



4. General Financial Support

Personal Independence Payment (PIP)

Non-means-tested support for extra living costs related to long-term health conditions or disabilities.

Universal Credit / Employment and Support Allowance (ESA)

Financial support for individuals unable to work or with limited capacity for work.

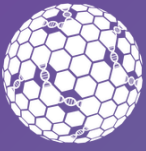
Council Support Funds

Some local authorities may offer grants or discretionary financial support.

Top 5 Tips for Applying

- 1 Apply early whenever possible
- 2 Keep copies of all documents and applications
- 3 Ask universities about hidden hardship or disability funds
- 4 Don't assume you are ineligible for support
- 5 Reach out to NGOs or advocacy groups for guidance





5. How to Apply for Support

1

Research Available Funding

Explore government, university, charitable, and disability-specific support options.

2

Check Eligibility

Review disability, income, education, or location requirements carefully.

3

Gather Documents

You may need: medical documentation, proof of enrolment, financial information, recommendation letters.

4

Submit Applications Early

Many funding programs have deadlines and limited availability.

5

Follow Up if Needed

Track applications and respond to requests for additional information.